

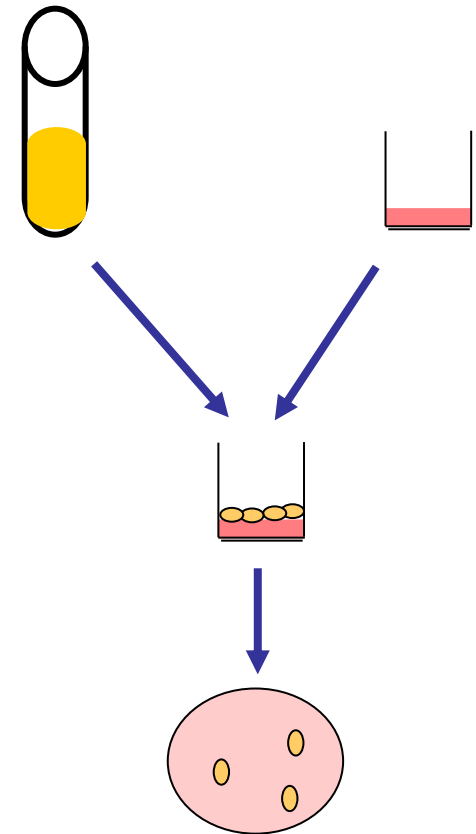
Ovalgen CA

Incidences

- More than of **70%** of healthy women have vaginal Candidiasis.
- **The most common affected area**
Gastrointestinal tract (mainly mouth cavity)
Vaginal mucosa Skin.
- **Predisposing factors:**
Immunocompromised states (disease & stress),
Old age Antibiotic treatment

In-vitro adhesion inhibition assay

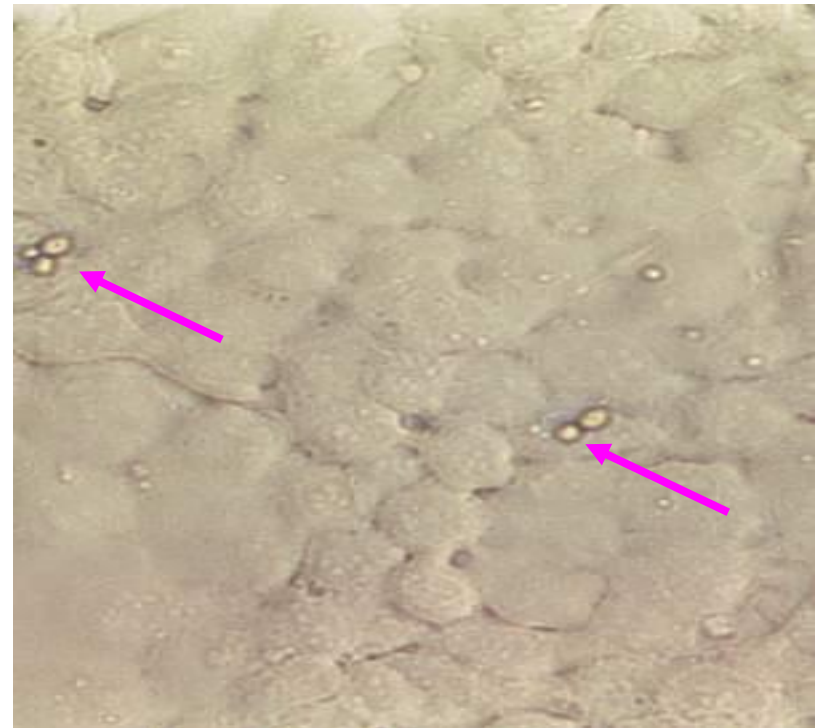
1. Prepare monolayer of **FaDu cells** in 24-well plate
2. Mix α -CA IgY with CA (5×10^6 CFU/ml)
3. Incubate at 37 C for one hr
4. Add 500 μ l of the mixture to cells
5. Incubate at 37 C for one hr
6. Wash with PBS
7. Count the CFU in YPD agar



PBS-treated



Anti-CA IgY-treated



MP:X200

Inhibition of CA adherence by IgY

Trial	1 st	2 nd	3 rd	4 th	5 th
Challenge dose	1 x 10 ³	7 x 10 ³	7 x 10 ⁶	3.4 x 10 ⁶	5 x 10 ⁶
α-CA IgY*	1.46	1.1	3.3	2.9	2.3
PBS treated*	2.48	2.8	6.2	5.8	5.9
Inhibition ratio	90.33	97.3	99.90	99.87	99.98

* Log 10 of adhered CFU/ml

Pilot study

Protocol of the study

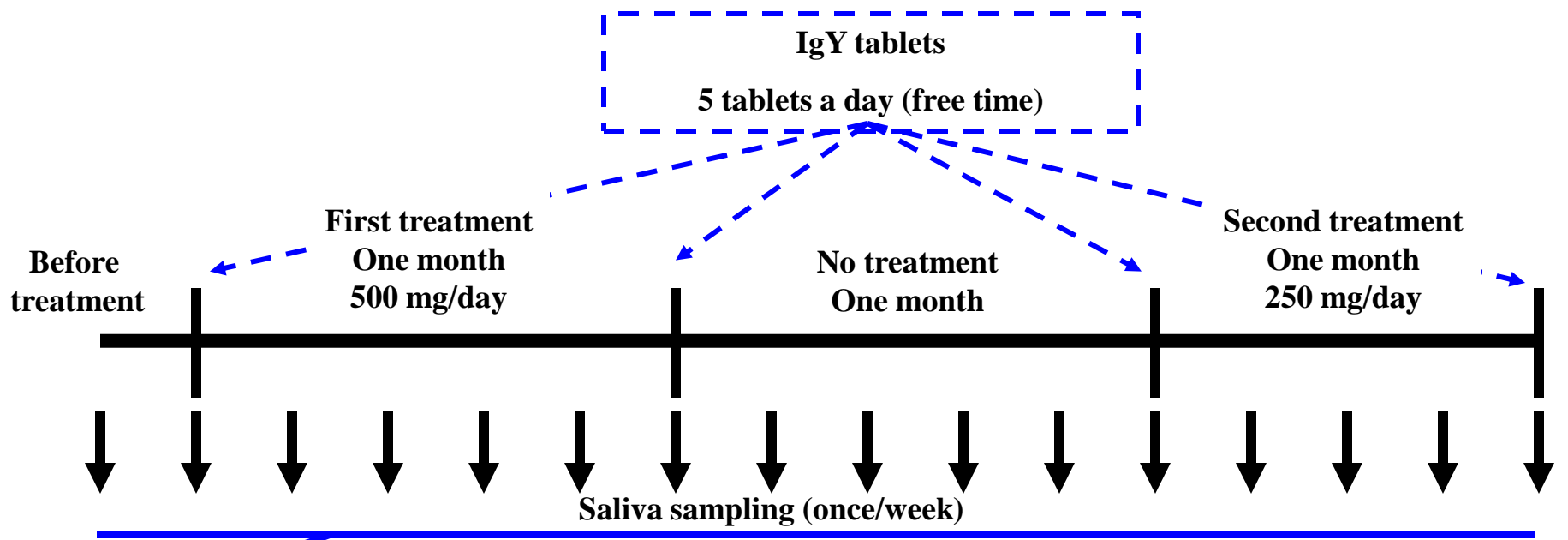
Number of volunteer: Two

Length of treatment: 3 month (3 steps)

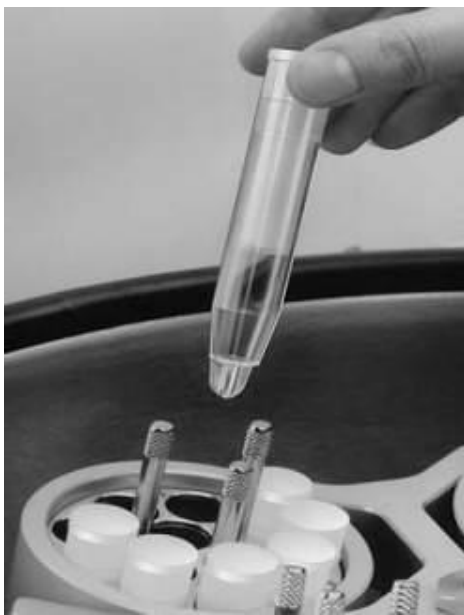
1. First step: Treatment with 500 mg/day for one month (5 tablets a day). One tablet contains 100 mg of anti-CA IgY (DYP).
2. Second step: Stop of treatment for one month
3. Third step: Treatment with 250 mg/day for one month (5 tablets a day). One tablet contains 50 mg of anti-CA IgY (DYP).

Sample: Saliva sample

Candida count: Count on Candida GE agar and Candida ID agar



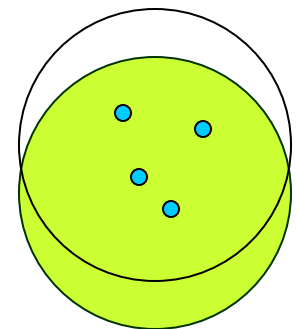
Sample collection



Centrifugation



Remove cotton



**Serial dilution
and CFU count**

Pilot trial result

500 mg/day Stop 250 mg/day Stop 100 mg/day

